

DEL VALLE REGIONAL PARK

To Tesla Road in Livermore ↑
Mines Road

LEGEND

- Hikers, Horses & Bicycles
- Hikers & Horses
- Paved Road
- Seasonal Stream
- Mileage Between Points
- Parking
- Horse Staging
- Information
- Horse Water
- Family Campground
- Reservable Group Camp
- Gate



0 .25 .5 Mi.
Contour interval 40 feet.
Mileages courtesy Hal MacDonald,
EBRPD volunteer.

IN ORDER TO REDUCE OR PREVENT THE RISK OF SERIOUS HEAD INJURY OR DEATH, STATE LAW REQUIRES THAT ALL BICYCLISTS UNDER AGE 18 WEAR AN APPROVED HELMET WHILE RIDING ON TRAILS AND ROADWAYS. THE DISTRICT ALSO STRONGLY RECOMMENDS THAT ALL EQUESTRIANS AND BICYCLISTS WEAR HELMETS AT ALL TIMES.

MEMBERSHIPS
The Regional Parks Foundation offers Memberships to park users. Benefits include free parking, swimming, and off-season camping discounts, depending on Membership category. For more information, call (510) 544-2203.

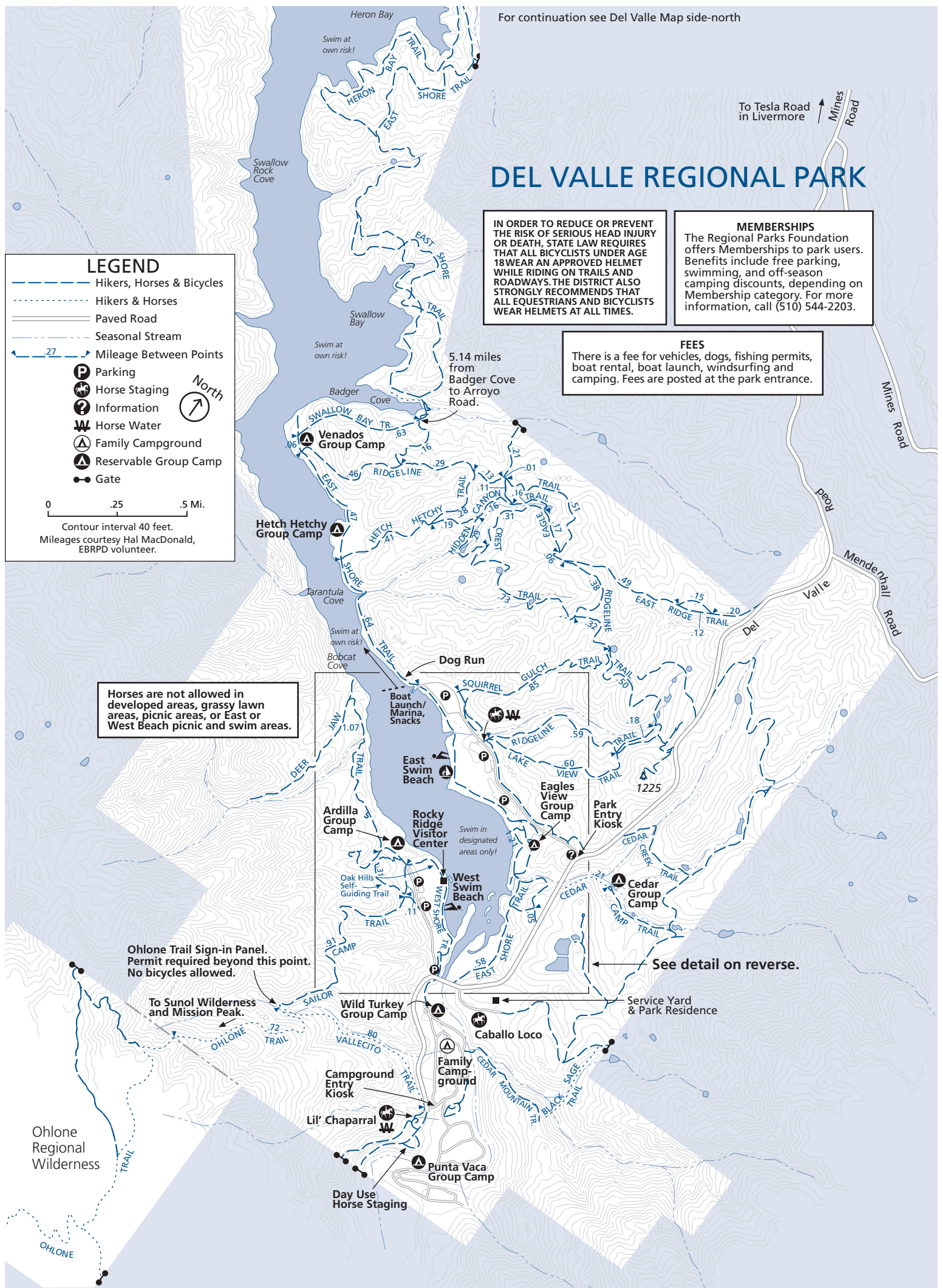
FEES
There is a fee for vehicles, dogs, fishing permits, boat rental, boat launch, windsurfing and camping. Fees are posted at the park entrance.

5.14 miles from Badger Cove to Arroyo Road.

Horses are not allowed in developed areas, grassy lawn areas, picnic areas, or East or West Beach picnic and swim areas.

Ohlone Trail Sign-in Panel. Permit required beyond this point. No bicycles allowed.

See detail on reverse.



Ohlone Regional Wilderness

Day Use Horse Staging

Service Yard & Park Residence

Caballo Loco

Family Campground

Punta Vaca Group Camp

Lil' Chaparral

Wild Turkey Group Camp

Ardilla Group Camp

Rocky Ridge Visitor Center

Eagles View Group Camp

Cedar Group Camp

West Swim Beach

East Swim Beach

Dog Run

Venados Group Camp

Hetch Hetchy Group Camp

Swallow Bay

Swallow Rock Cove

Heron Bay

Del Valle

Mendocino Road

Mines Road

Badger Cove

Tarantula Cove

Bobcat Cove

Boat Launch/Marina, Snacks

Oak Hills Self-Guiding Trail

Sailor

Vallecito

Cedar

Black Sage

Cedar Mountain Tr.

Ohlone