

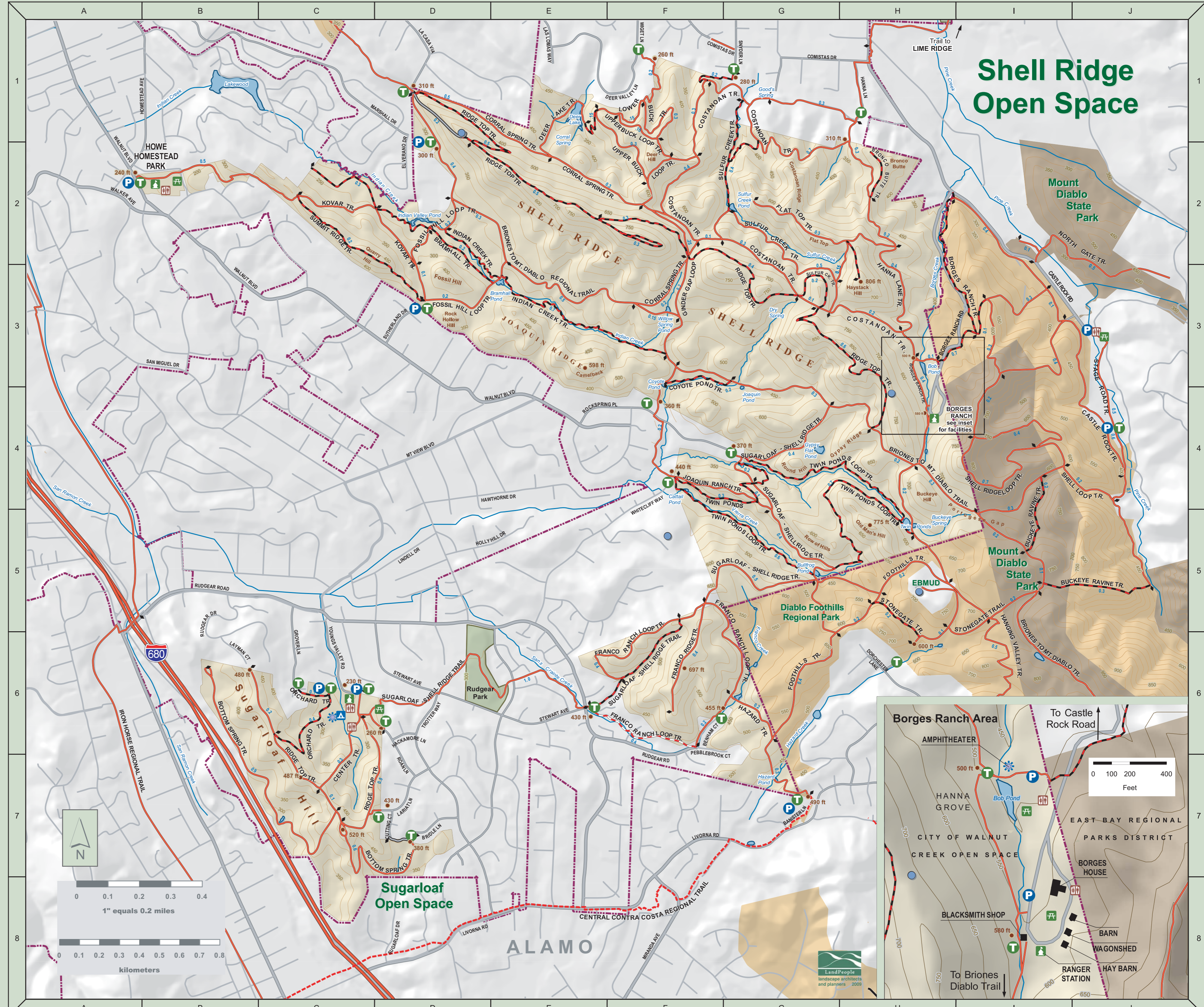
Welcome to the City of Walnut Creek Open Space

During your visit, please observe the following regulations:

- The Open Space is open during daylight hours only. (WCMC Art. 4 sec. 11-1.401)
- All plant, animal, and geological features are protected. Do not capture, collect or harm. (WCMC Art. 5 sec. 11-1.506)
- Bicycles are permitted only on paved trails, and unpaved roads over eight feet in width, unless otherwise posted. Bicycles shall be operated in a safe manner with a speed not in excess of 15 M.P.H. (WCMC Art. 5 sec. 11-1.516)
- Dogs may be allowed off leash in open space areas when accompanied by, and under the positive control of, the person bringing the dog into the open space. "Positive control" shall mean in sight of and under direct obedient command of the person bringing the dog into the park. (WCMC Art. 5 sec. 11-1.507)
- Motorized vehicles of all types are prohibited. (WCMC Art. 5 sec. 11-1.515)
- Firearms, weapons and destructive devices are not permitted. (WCMC Art. 5 sec. 11-1.505)
- Camping and fires are not permitted. (WCMC Art. 5 sec. 11-1.502, 503)
- Alcoholic beverages may not be consumed within the Open Space. (WCMC Art. 5 sec. 11-1.514)
- Due to fire hazards, smoking and open fires are prohibited in the Open Space. (WCMC Art. 5 sec. 11-1.513)

Litter destroys beauty. If you pack it in, pack it out! Thank you!

Facilities	Trails
Trailhead	Mileage
Parking	Hiker Only
Camp Facilities	Hiker, Horse only
Amphitheater	Hiker, Horse, Bike
Picnic Area	Connector Trail
Ranger Station	Paved
Restroom	
Parks / Open Space	
Walnut Creek Open Space	
Concord City Parks	
State Parks	
City Parks	
East Bay Regional Parks	
Features	
Water tank	
50' Contours	
Spot Elevation in feet	
Lakes and Ponds	
Creeks (may be intermittent)	
City Limit	



Shell Ridge Open Space

Borges Ranch Area

To Castle Rock Road

To Briones Diablo Trail

AMPHITHEATER

HANNA GROVE

CITY OF WALNUT CREEK OPEN SPACE

BLACKSMITH SHOP

500 ft

580 ft

0 100 200 400 Feet

EAST BAY REGIONAL PARKS DISTRICT

BORGES HOUSE

BARN

WAGONSHED

RANGER STATION

HAY BARN

LandPeople landscape architects and planners 2009