

Mount Diablo STATE PARK

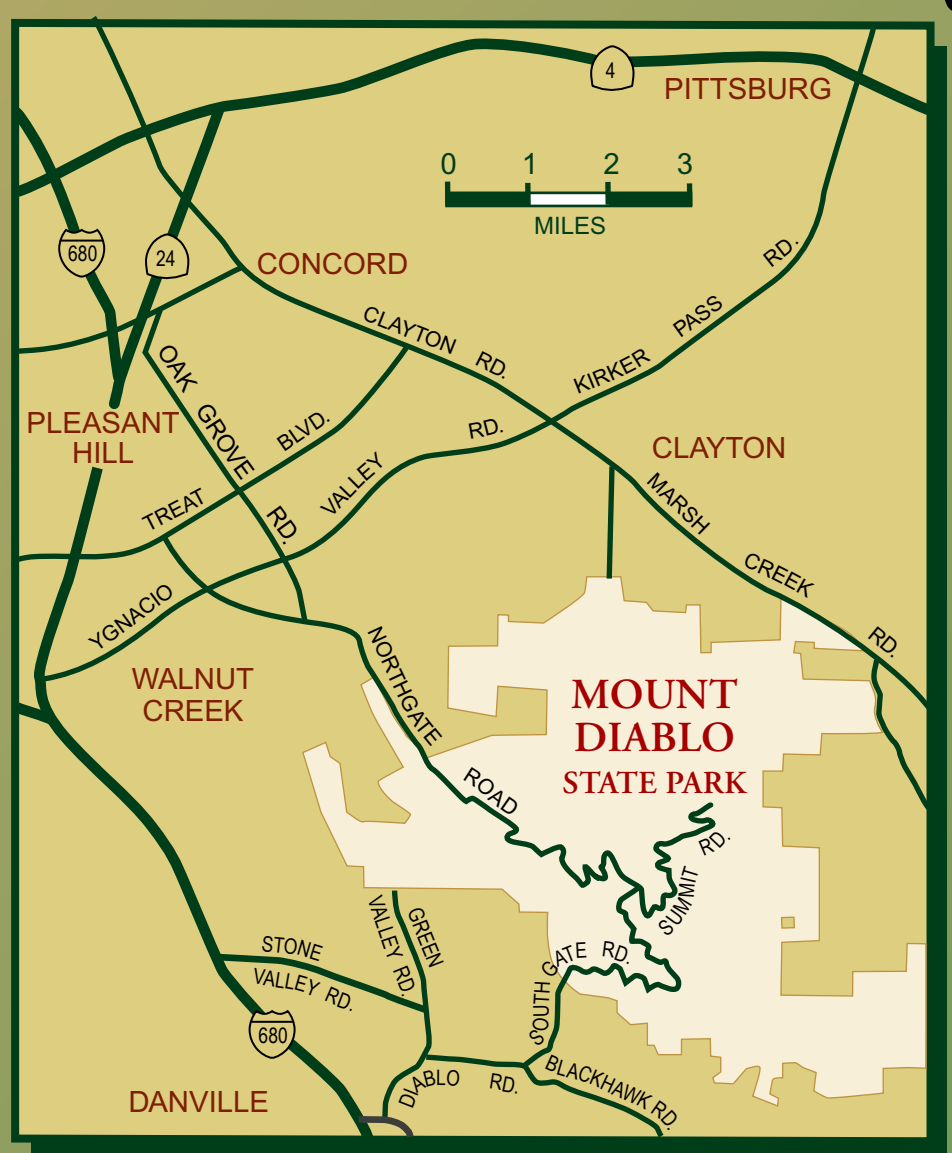
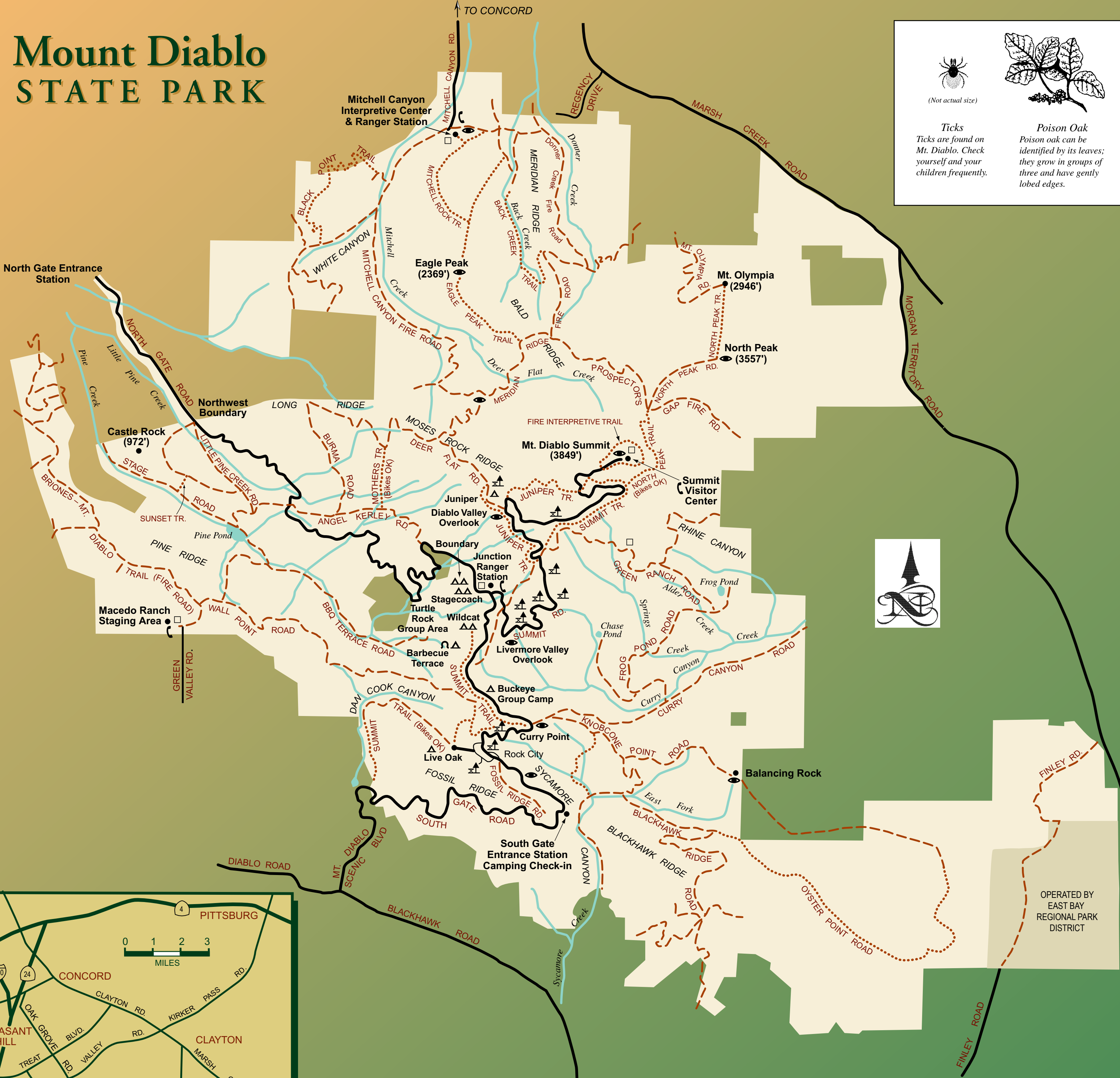
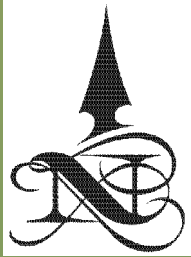


(Not actual size)

Ticks
Ticks are found on Mt. Diablo. Check yourself and your children frequently.



Poison Oak
Poison oak can be identified by its leaves; they grow in groups of three and have gently lobed edges.



Most land adjacent to the park is private property.
No trespassing without owner's permission.

- PAVED ROADS
- FIRE ROADS (HIKING BUT NO VEHICLES)
- HIKING TRAILS
- CAMPING
- GROUP CAMPING
- HORSE CAMPING
- PICNIC AREA
- POINT OF INTEREST
- RESTROOMS
- TELEPHONE

OPERATED BY EAST BAY REGIONAL PARK DISTRICT